

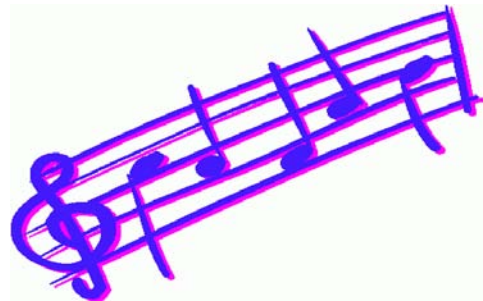
***Lindfield Public School
Band Programme
Handbook***

2012

Contents:

Part 1:

Welcome.....	2
From the Committee Convenor.....	2
About the Band Programme.....	2
Our Bands.....	2
Our Conductors.....	3



Part 2:

What is a Concert Band?.....	6
How To Join the Band?.....	5
Dates for Your Diary.....	5
Choosing an Instrument.....	6
Band Rehearsals 2007.....	9
Our Tutorial Programme.....	10
Awards.....	10



Part 3:

Band Programme Fees.....	12
Instrument Hire and Purchase.....	12
About the Committee.....	13
Parent-Student Communication.....	14
Application Form.....	15

Welcome

The Lindfield Public School Band Programme, established in 1979, is a successful and vibrant band programme that enjoys an enviable reputation throughout Sydney and NSW.

In 2011, as in previous years, the various bands participated in music festivals, regional tours, competitions, charitable and community concerts.

The Lindfield Public School Band Programme is successful because it emphasizes four important things: commitment, dedication, musical excellence and fun.

This information booklet provides an overview. By understanding how the Programme works, the expectations of band membership and your role in the process, you will be helping us maintain the Programme's exemplary standards thus ensuring maximum benefit to your child.

From the Committee Convenor...

Welcome to all those considering joining the Lindfield Public School Band Programme. We are truly privileged to have such a marvellous opportunity for our children to learn to play a musical instrument whilst also enjoying the camaraderie of their peers in the band environment. It is true that joining the Programme is a big commitment from a time and financial point of view but having been involved with the LPS Band Program for many years as a parent and this year as Convenor I can honestly say that it is a fantastic Programme and it is always fascinating to watch the children's progress from absolute beginners to quite accomplished musicians by the end of year 6.. I am constantly amazed what can be achieved in such a short period of time. We hope that all your questions are answered by this Handbook and we look forward to your children becoming LPS band members in the very near future!

About the Band Programme

The Band Programme consists of three bands:

- Junior Band
- Intermediate Band
- Concert Band

(We also have a Stage Band. Entrance to Stage Band is through an audition).

2012 membership is open to all students from years 3 to 6.

Generally, (there can and have been exceptions), students will spend their first year in Junior Band, their second and subsequent years in Intermediate Band. Those students wishing to enter Concert Band will be required to audition.

Our Bands

Junior Band

Junior Band is comprised of students predominantly in years 3 and 4 (5 & 6 are also welcome). These students are generally in their first year of playing. Each year the Junior Band participates in the Bush Dance, Education Week, NSW School Band Festival, Nth Shore PS Band Festival, assembly performances, open rehearsals, Roseville Kindy performance and most importantly, the annual Music Camp and Music Spectacular.

Intermediate Band

Intermediate Band is made up of students predominantly in years 4 and 5. These students are generally in their second year of playing. Each year the Intermediate Band participates in the Bush Dance, Education Week, Yamaha Festival, NSW Band Championships, Nth Shore PS Band Festival, assembly performances, a day tour to a regional area, open rehearsals, the annual Music Camp and the Music Spectacular.

Concert Band

To progress from Intermediate Band to Concert Band children need to audition. Concert Band is our premium band and suitable for children who regularly practise and who want to experience more challenging music. Positions in Concert Band are offered to students who demonstrate exemplary musical skill in Intermediate Band.

Each year the Concert Band performs at the Bush Dance, Education Week, NSW Band Festival, Nth Shore PS Band Festival, several community based events during the year, the Yamaha Festival, school assemblies, open rehearsals, solo concerts and formal school events such as Presentation Day. In addition, the students attend the annual Music Camp and a tour of regional NSW.

Our Conductors

Tim Ferrier (BMus BEd)

Tim Ferrier graduated from the UNSW with a double degree in music and education in 1993. Rather than teach in the classroom he chose to teach bands and tutor brass instruments. Since 1994 he has taught concert and stage bands in a number of schools in Sydney's north. His bands have received many outstanding results including Command Performance invitations at the Yamaha Festival, gold awards at the NSW Schools Band Festival and 1st and 2nd places at the McDonalds Performing Arts Challenge with marks as high as 98/100. Tim is also the Wind Ensemble director of the Northern Sydney Youth Orchestra. As a performer Tim played French horn in the Australian Wind Orchestra touring Hong Kong and Japan in 1995. From 1997 – 2001 he was the trumpet player in the Big Big Band – one of Sydney's busiest corporate party bands at that time. Since 2004 he has played 1st horn in the Northwest Wind Ensemble – currently the state and national champion open 'A' grade concert band. Tim has also played horn and trumpet with numerous other community bands, orchestras and

musical societies. Outside of teaching and playing Tim also composes music. He has a Graduate Certificate in Sound from UTS and has an interest in sound design and composing for film and other media projects.

Susan Lammi Bmus (Mus Ed)

Susan Lammi has been involved with music since she began playing piano at the age of six. She began trombone in the Beaumont Rd Public School Brass Band in year 4 and has continued playing ever since. Susan studied Music Education at the Sydney Conservatorium of Music and has performed with such ensembles as the Sydney Youth Orchestra. Susan now works as a primary classroom music specialist, conducts a variety of primary school bands and choirs and teaches low brass to students in years three to twelve. Susan enjoys teaching very much and loves all the fantastic experiences that music has brought her. She currently conducts the Junior Band at Lindfield Public School but in 2010 will co-conduct Intermediate band.

Sian Joyce (B.A. Dip. Ed. A.MusA)

Sian Joyce has been involved in music most of her life. After studying piano, flute and singing at University she began her professional life as a high school music teacher and opera singer. She sang with many organisations including The Australian Opera, Willoughby Symphony Orchestra and The Mostly Mozart Concert Series to name a few. As a high school teacher she conducted many ensembles including choirs, rock bands and concert bands. She tutored at the state music camps, conducted the combined high school choir at the Town Hall and conducted the Australian Youth Choir for many years. After taking a break from teaching, Sian returned to the profession teaching music in primary schools and conducting concert bands. For the past 4 years she has co-conducted Intermediate Band and in 2010 she will conduct Junior Band.



Part 2:

What is a Concert Band?

A Concert Band (often referred to as a 'wind orchestra') is an ensemble structure specifically designed for educating masses of musicians on a variety of instruments.

The ensemble, as it exists today, became increasingly popular because of its adaptability to music education. Originally, used only in military settings, the concert band is now the most popular ensemble world wide for teaching instruments in school settings.

As a rule, concert bands consist of the following instruments (note this list is not exhaustive)...

Woodwinds:

Flutes
Oboes*
Clarinets
Saxophones
Bassoons*

Brass:

Trumpets

French Horns
Trombones
Euphoniums
Tubas
(Keyboard Tuba)

Percussion

Drums
Timpani
Mallet Percussion (xylophone & glockenspiel)
Auxiliary Percussion

As a band conductor, we need to ensure that the ensemble is BALANCED

As you will appreciate, achieving a balance of instruments requires careful consideration. Please explain to your children that all instruments are equally fun, rewarding and challenging. Students need to keep an open mind and elect a variety of preferences to ensure we can create a successful team.

As a guide (there is some flexibility):

30-piece band:

5 flutes, 8 clarinets, 3 saxophones,
4 trumpets, 2 horns, 2 trombones,
2 euphoniums, 1 tuba, 1 keyboard, 2 percussionists

40-piece band

7 flutes, 10 clarinets, 4 saxophones,
6 trumpets, 2 horns, 3 trombones,
2 euphoniums, 2 tubas, 1 keyboard, 3
percussionists

50-piece band

9 flutes, 12 clarinets, 5 saxophones,
7 trumpets, 4 horns, 3 trombones,
3 euphoniums, 2 tubas, 1 keyboard, 4
percussionists

* Oboes and Bassoons are rarely found at a primary school level. Anyone wishing to learn these should talk to the directors. There are cost, size and strength limitations. On the positive side of the

scale, because they are rarely found, opportunities to participate in state and national ensembles abound!



How To Join the Band?

Being part of the Band Programme is both rewarding and beneficial to your children. In addition to the general disciplinary, commitment and of course musical skills it teaches, it is extremely fun!

Below is a step-by-step guide on how to become involved.

- i. Read through the booklet
- ii. Attend the band information evening
- iii. Discuss instrument choices with your child
- iv. Hand in instrument choice forms (attached to the back of this booklet)
- v. Children sit an informal listening quiz and conductors check physical suitability for instruments
- vi. Wait for instrument allocation form
- vii. Hand in instrument acceptance form

Dates for your Diary

**Band Information Evening
Tuesday 1st November 2011
7:00pm in the School Hall**

Application forms in:
Locked Music Box by Friday 11th
November 2011



Listening and physical aptitude test:
Friday 18th November 2011



Instrument allocations emailed out:
Late November 2011



Instrument acceptance and Fees
Locked Band Box by Friday 2nd
December 2011



Band Committee AGM

TBA 🎵



Tutorial times out:

February 2012



Junior Band tutorials start:

February 2012



Junior Band Rehearsals start:

March 2012

Clarinets are to concert bands as violins are to orchestras. They have a large range, their lowest notes being lower than the saxophone and their highest notes almost reaching the highest note of a flute. Clarinets require considerable fine motor/dissociation skills but slightly smaller air capacity than the flute. Their sound, created by airflow and a vibrating reed, is rich and sonorous (after some practice...)

Choosing an Instrument

'The Woodwind Section'

Flute



The **flute** is the highest instrument in the band. It is a quiet and sweet sounding instrument. Students with smaller lips and competent fine motor/ dissociation skills suit the flute. Contrary to popular belief, the flute requires similar air capacity to that of the tuba.

Clarinet



Saxophone



The **saxophone** comes in four sizes. At a primary school level we use the alto and tenor saxophone. Learning the fingering on one saxophone allows students the versatility to play all saxophone types; soprano, alto, tenor and baritone. The saxophone is similar in pitch to the French Horn but has a slightly edgier sound. It is suitable for all students, but is difficult to play if they are small.

'The Brass Section'

French Horn



The **French Horn** is one of the most glorious sounding instruments on the planet. It has a sweet and mellow sound but when played loudly, has extraordinary power, making it very popular with orchestral writers such as John Williams (of *Star Wars* fame) and Gustav Holst (composer of *The Planets*/ theme song of the Rugby World Cup). Students need good listening skills and ability to create a small ‘buzz’ with their lips. There is a persistent shortage of good French Horn players meaning as students improve, there are frequent opportunities – especially in high schools.

Trumpet



The **trumpet** is the playground of the energetic and exuberant. It can be a sweet melodious sounding instrument or an edgy/ punchy sounding instrument making it one of the most versatile instruments in the band. It is commonly used in all ensemble types from jazz and rock to classical and film music. Students must have the ability to produce a ‘buzz’ and good ‘tummy power’ (diaphragmatic air support).



Euphonium

The **Euphonium** has a sound similar to that of the French Horn, making it equally popular with film composers. It is part of the most important section in the band – the basses. However, it has the versatility to play fast and furious melodic passages as well as a low enough range to form part of the bass line. Its mouthpiece is large making it easy to play and immediately produce a large, rich and warm sound.

[Note, we also have **Baritones**, a slightly smaller version of the Euphonium. Students in Junior Band are often placed on Baritone and progress to Euphonium as they grow]



Trombone

The **trombone** is the only instrument that uses a slide system to change its pitch. Students need to have good listening skills. Like the trumpet, the trombone is incredibly versatile. Because it has the capacity to play classical, jazz and rock, it is a very popular instrument. What’s more, it is the only instrument that can produce a ‘glissando’ and a very cool car racing noise, which has surprised more than few conductors.



Tuba

As you can see, the **Tuba** is a relative of the Euphonium. At LPS we play the smallest Tuba, specifically designed for young musicians. It is the lowest pitched instrument in the band, and as such provides the foundation for every piece of music ever composed. It is suited to students with good listening abilities. The Tuba is the one instrument that a trained musician always relies on. Its sound is both rich and powerful. At LPS, we are fortunate to own enough tubas to allow students to keep one at home, and have another one of their own at school.



Keyboard Bass

At LPS we invite *one* person to double the tuba part on keyboard. Students are taught to use their left hand to play the bass parts. This instrument is suited to students who are working toward playing *piano*, and as with all other instruments, the student must be having private lessons with a piano teacher outside of school.

'The Percussion Section'



Drum Kit

Students electing to learn **Percussion** will learn *all* of the following instruments.

The drum kit forms part of the percussion section. Students undertaking to learn drums need to have excellent coordination and most importantly, a *very steady* sense of beat. Budding young percussionists at LPS are taught the full gamut of percussion instruments. Students need to be dedicated and preferably organised, as percussion requires constant flexibility and multi tasking.



Timpani

Timpani are used to support the bass line and punctuate dramatic parts of the music. Students are taught to read pitch as well as rhythm as they progress up the band structure.

Auxiliary Percussion



Percussionists, in addition to being competent drummers and timpani players are required to juggle up to 30 different percussion instruments, each with their

own unique technical requirements. These smaller instruments include cymbal, cabassa, vibraslap, maraca, gong, bass drum, bongo, conga, wind chimes and claves to name a few.



Glockenspiel

The **Glockenspiel** is constructed similarly to a piano, but forms part of the percussion section because it needs to be struck in order to make a noise. The glockenspiel often doubles the flute and clarinet lines, adding additional punctuation to important lines. It requires excellent coordination.

Remember!
Choose a range of instruments and keep an open mind.

Where possible, students will be given an instrument of their choice – but we cannot guarantee this if the collective choices result in an imbalanced band.

Band Rehearsals 2012

Each band rehearses twice weekly, *usually* one morning practice and one afternoon practice.

All rehearsals take place in the School Hall. The following is a guide as rehearsals are subject to hall and conductor availability.

Junior Band

Tuesday 7:40am – 8:50am
Thursday 3.15pm – 4.15pm

Intermediate Band

Tuesday 3:00pm – 4:15pm
Thursday 7.30am – 8.50am

Concert Band

Wednesday 3:00pm – 4:15pm
Friday 7.20am – 8.50am

3.00 – 3.15pm will be for children to eat afternoon tea, outside the hall, and set up ready for rehearsal at 3.15pm.

Our Tutorial Programme

In addition to the twice-weekly rehearsals, all students involved in the Band Programme ***must undertake a weekly private lesson.***

The students need specialist instruction on the complexities of their instruments in a one to one situation to ensure they are learning the correct technique. Each instrument has particular requirements that can only be taught by a teacher who plays that same instrument.

Lindfield operates the tutoring programme internally – making it possible for all students to have lessons on weekdays after school on Lindfield Public School grounds.

Once instrument allocations are accepted, parents and students will be asked to nominate preferred days for lessons, and your children will be given a lesson time.

We have over 15 professional instrumental teachers coming into the school each week to teach our 130 musicians.

Once tutorial times and days have been established, parents are encouraged to take an active part in their child's musical education by attending lessons and communicating directly with the tutors.

Progress reports are handed out midyear to every parent involved in the tutorial Programme.

Awards

In order to maintain the high standard of our Bands, there needs to be some process to ensure children are ready to move up to the next Band in the following year. In the past (until end of 2007) this was done by an individual assessment of each child during school hours by the conductors. However in 2008 this process changed and Mr. Tim Ferrier, our Band Director, introduced the Award system.

The Awards are:

Bronze Award – to be completed by children in JB to ensure they have the minimum skills required to move into IB
Silver Award - to be completed by children in IB to ensure they have the minimum skills required to stay in IB.
Gold Award - to be completed by children currently in CB (who will remain in the Concert Band or be moving into High School)

In 2010 we introduced the **Diamond Award** – the pinnacle of achievement for those who have completed all three awards and in their final year at Lindfield

The Award requirements are given to the children to work on in tutorials early term 3 and they should be easily obtainable. Mr. Ferrier has chosen the skills required for each instrument at each level and this includes scales and some pieces. Tutors will mark off the skills as achieved.

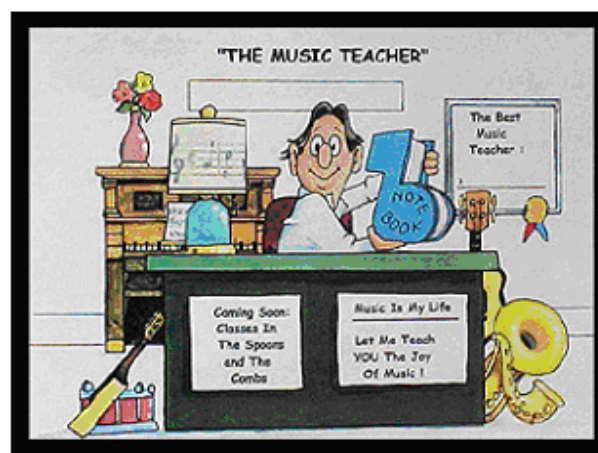
Then students hand the completed form to their Conductor who will listen to the student perform a Band piece (as decided by the Conductor)

These Award requirements should be completed by the end of term 3 and an Award Certificates will be received by

each child completing the requirements at a special music assembly in term 4.

Lindfield Public School is one of only a handful of schools that offers such an integrated programme. The results, as you will see for yourselves, are spectacular.

Please note – we do not offer private instruction in oboe, bassoon or piano.



Organisation of Tutorials

Tutorials are allocated by the Music Committee taking into consideration many factors; your preferences for days and times, tutor's availability, band rehearsal times, age of the student and room availability to name a few. Junior Band students, where possible, are allocated earlier time slots.

You will be notified of your allocated times in February 2012

Paying Tutors

All LPS instrumental tutors will invoice parents directly once per term. Please:

- ♪ Do not send cash to school with your child
- ♪ Pay the tutor directly

- ♪ Pay the invoice promptly (within 2 weeks of receipt of invoice)

Missing Lessons

It is sometimes necessary to miss lessons due to illness or multiple commitments. All parents are expected to notify tutors, well in advance where possible, if a lesson is to be missed.

Lessons missed without notification must be paid for (except in extenuating circumstances)

Where notice is given the majority of tutors will endeavour to re-schedule the lesson.

Reciprocal obligations are placed on tutors when they are unable to attend a lesson.

Where tutors are unable to make a series of lessons- they must organise a replacement teacher and inform both the Committee and parents.

Please remember to respect our tutors as professional teachers. Teaching your children is their occupation and *income*.

What to expect from your tutors?

Your child will learn the basic skills and techniques specific to their instrument.

They must learn to read music, as music literacy is the cornerstone of the band Programme.

Your tutor will choose suitable music for your child and should encourage performances of pieces in addition to those provided by band conductors. This may include purchasing books.

Tutors should write down homework and practice schedules at each week's lesson for the students and parents to follow.

Home Practice

Junior Band students will begin with short 5 – 10 minute practices. As they develop, practice sessions should increase in length.

The average practice for second and third year players is 20 minutes – 4 to 5 times a week.

When students are approaching instrumental exams or working toward performances, practices can be 50 to 60 minutes in length.

Tutors will indicate both the number and length of practices appropriate for your child.

Musical development, like everything in life, correlates directly with the amount of work put in.

Number of practices:

Below average – twice a week

Average – three to four times a week

Above average – practicing every day

Optional Instrumental Exams

Tutors should discuss with you the possibility of sitting instrumental exams run by the Australian Music Examinations Board (AMEB) or Trinity College London Exams. (Trinity)

Regardless of your decision to sit exams, all students must be learning:

- ♪ Scales (rudiments for percussion)
- ♪ Embouchure and tonguing exercises
- ♪ Studies
- ♪ Classical pieces
- ♪ Jazz pieces
- ♪ Band music

Band Programme Fees

Sample Cost Summary (subject to change)
Junior Band Fees: \$440.00 per annum;
Music Camp: \$740 per annum; Tutorials:
\$34.00 per week; plus start up expenses of
instrument hire or purchase

The Band Programme at Lindfield Public School operates on a non-profit basis and is funded essentially through band fees paid by participating students. Funding is also assisted by fundraising activities and some grants and donations during the year. Every attempt is made to keep the fees as low as possible to ensure that the band Programme remains accessible to all interested students.

Band Fees are paid twice a year .Half the fees are payable upon return of the acceptance form for incoming JB students on the 3rd of December or upon return of Intentions for 2011 form for all other students. The other half are invoiced in Semester 2, 2011.

Band Fees are used to pay Band Conductors, purchase instruments and music, pay for instrument repairs and maintenance and subsidise transport costs for band related excursions throughout the year.

In addition, there are self-funding events each year, notably the annual band camp (all bands) and the Concert Band Tour.

Sample Cost Summary

(Based on 2009 figures/ subject to change)

Junior Band Fees: \$ 440per annum
Music Camp: \$270 per annum
Tutorials: \$34 per week
+ start up costs of instrument hiring

Instrument Hire and Purchase

a) Instrument Hire

LPS Band Committee does not hire out the full range of instruments. The instruments hired out are those that are less commonly played or those that are more expensive to purchase, but are essential to enhancing the quality of our Bands. We do not hire out flutes, clarinets or trumpets. We do hire out:

- Trombones • French Horns • Tubas • Glockenspiels • Baritones / Euphoniums • Drum Kits (limited number) • Alto Saxophones (priority goes to JB members)
- Tenor Saxophones (priority goes to JB members)

b) Instrument Maintenance

Upon hiring an instrument from LPS Band Committee, a written agreement will be entered into between the Band Committee and the student/family to ensure care and responsibility will be taken for the instrument. The instrument will be hired out and the condition of the instrument will be noted and agreed upon prior to hiring. The Band Committee will take responsibility for maintenance of the instrument. The student/family is responsible for any damage to the instrument that is outside normal wear and tear. During each Christmas holidays all instruments are fully serviced.

c) Instrument Hire Costs (other than Percussion)

At the time of hiring the instrument:

- i) \$150 Instrument Hire Bond will be paid that is retained while instrument is out for hire. Bond is returned by request when the instrument is returned to LPS in good order; and
- ii) \$200 Hire Fee for the year will be charged (invoiced at \$100 per Semester.)

d) Instrument Hire Costs – Percussion only

At the time of hiring the glockenspiel:

- i) \$50 Instrument Hire Bond will be paid that is retained while instrument is out for hire. Bond is returned by request when the instrument is returned to LPS in good order; and
- ii) \$60.00 Hire Fee for the year will be charged (invoiced at \$30 per Semester.)

e) Insurance of Instruments

All school instruments are covered by the school policy against loss or theft whilst on the school premises. Once the instrument is outside the school premises it is NOT covered by the school policy. As you do not own the instrument it is not normally covered under your personal effects or home contents policy and you will need to specifically insure the instrument. A call to your insurer should ensure that the instrument can be covered.

f) Purchasing Instrument

We offer the following general advice in respect of purchasing an instrument for your child:

- i. Shop around – prices vary substantially.
- ii. Ensure you are purchasing a trusted/failsafe brand. Cheaper brands often result in constant repair costs, are difficult to play and worst of all – are out of tune!
- iii. Talk to your tutor or a professional player (of the instrument you're purchasing) before you purchase
- iv. Get a warranty – and free service if possible

- v. Remember – some shops (if not most) are contracted to certain suppliers/ manufacturers so they will push particular brands. Shop around to ensure you get the best price and best instruments.

Some suggested places to look for an instrument

- ♪ Gary Haines Musical Supplies
- ♪ Music Corp Crows Nest
- ♪ Engadine Music
- ♪ Dickson's Music (Chatswood)
- ♪ Sax and Woodwind (City)
- ♪ Eagle Music (Dee Why)
- ♪ Turrumurra Music
- ♪ Lindfield Lines (in late November)

About the Committee

The Band Committee is a sub committee of the P & C and is responsible for the administration of the Band Programme. Each band has a team of parents who support the band conductor and assist in organising parent support for activities associated with their bands.

The Committee also needs people to organise instrument hire, fund raising, equipment transport, equipment maintenance & repair, finances, and general decorations catering, secretarial and PR work throughout the year.

The **AGM** will be held sometime in December. It will be advertised in the Lindfield Lines and committee meetings are held once a term. Occasionally a second meeting will need to be scheduled to organise activities such as Music Camp.

Please remember that the Band Committee is made up of volunteer parents working to achieve the collective best for the students of Lindfield Public School. Parental support is requested, urged and encouraged!

Parents wishing to lend a hand in any way are invited to either attend meetings and or contact any Committee member or in particular, those listed below.

Contacting the Committee

Convenor

Di Stewart

jjs85@bigpond.net.au

Co-Convenor

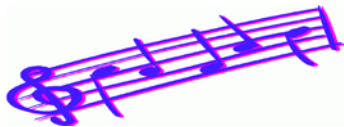
Sian Joyce

sian@bigpond.net.au

Parent Student Communication

Since February 2006, almost all communication has been done via email. This has proven an efficient and effective way of keeping parents and students abreast of the Band Programme activities.

In addition, each Lindfield Lines features a band report, covering the comings and goings of our talented young musicians.



2012 Band Application Form

This form is due back to the box marked '**Junior Band Applications**' by **Friday 11th November**. The box is located in the administration building near the canteen/side exit.

Students Name:

_____ Students Class 2011 _____

Parents Names:

_____ /

Mailing Address:

_____ Post Code:

Home Telephone:

_____ Work
Telephone: _____

Mobile Telephone:

Mobile Telephone: _____

Primary Email Address
Please write clearly

Secondary Email Address
Please write clearly

Has the applicant had any previous musical experience? If so give details.
(Please note, musical experience is not necessary)

Is your child leaving the school at the end of year 4?
YES NO
Please circle

Are any immediate family members involved in musical activities? YES NO

Please circle

Give Details

Instruments in our band are:

Flute		Trumpet
	Tuba	
Clarinet		French Horn
	Percussion	
Alto Saxophone		Trombone
	Keyboard (1 position only)	
Tenor Saxophone		Euphonium

Please place your top three preferences...**you must fill in all three preferences**

1 _____
2 _____
3 _____

♫ We have read the Band Handbook and understand the commitment required in joining the band including twice weekly rehearsals, weekly tutorials, attendance at band camp and concerts.

♫ We understand that in order to have a balanced band the child's first, second or third preferred instrument may be impossible to satisfy.

Student signature

Parent/ Guardian signature

Date:
